



Mnk1 Polyclonal Antibody

| | |
|---------------------------|--|
| Catalog No | YP-Ab-14859 |
| Isotype | IgG |
| Reactivity | Human;Mouse |
| Applications | WB;IHC;IF;ELISA |
| Gene Name | MKNK1 |
| Protein Name | MAP kinase-interacting serine/threonine-protein kinase 1 |
| Immunogen | The antiserum was produced against synthesized peptide derived from human MKNK1. AA range:111-160 |
| Specificity | Mnk1 Polyclonal Antibody detects endogenous levels of Mnk1 protein. |
| Formulation | Liquid in PBS containing 50% glycerol, 0.5% BSA and 0.02% sodium azide. |
| Source | Polyclonal, Rabbit,IgG |
| Purification | The antibody was affinity-purified from rabbit antiserum by affinity-chromatography using epitope-specific immunogen. |
| Dilution | WB: 1/500 - 1/2000. IHC: 1/100 - 1/300. ELISA: 1/20000.. IF 1:50-200 |
| Concentration | 1 mg/ml |
| Purity | ≥90% |
| Storage Stability | -20°C/1 year |
| Synonyms | MKNK1; MNK1; MAP kinase-interacting serine/threonine-protein kinase 1; MAP kinase signal-integrating kinase 1; MAPK signal-integrating kinase 1; Mnk1 |
| Observed Band | 51kD |
| Cell Pathway | [Isoform 2]: Cytoplasm.; [Isoform 3]: Cytoplasm. Nucleus. |
| Tissue Specificity | Ubiquitous. |
| Function | catalytic activity:ATP + a protein = ADP + a phosphoprotein.,cofactor:Magnesium.,enzyme regulation:Phosphorylated and activated by the p38 kinases and kinases in the Erk pathway.,function:May play a role in the response to environmental stress and cytokines. Appears to regulate transcription by phosphorylating EIF4E, thus increasing the affinity of this protein for the 7-methylguanosine-containing mRNA cap.,PTM:Dual phosphorylation of Thr-250 and Thr-255 activates the kinase. Phosphorylation of Thr-385 activates the kinase.,similarity:Belongs to the protein kinase superfamily.,similarity:Belongs to the protein kinase superfamily. CAMK Ser/Thr protein kinase family.,similarity:Contains 1 protein kinase domain.,subunit:Interacts with the C-terminal regions of EIF4G1 and EIF4G2. Also binds to dephosphorylated ERK1 and ERK2, and to the p38 kinases.,tissue specificity:Ubiquitous., |



Background

MAP kinase interacting serine/threonine kinase 1(MKNK1) Homo sapiens
This gene encodes a Ser/Thr protein kinase that interacts with, and is activated by ERK1 and p38 mitogen-activated protein kinases, and thus may play a role in the response to environmental stress and cytokines. This kinase may also regulate transcription by phosphorylating eIF4E via interaction with the C-terminal region of eIF4G. Alternatively spliced transcript variants have been noted for this gene. [provided by RefSeq, Jan 2012],

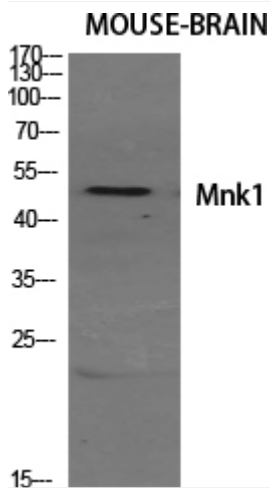
matters needing attention

Avoid repeated freezing and thawing!

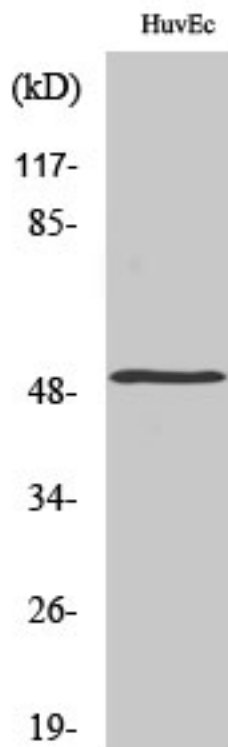
Usage suggestions

This product can be used in immunological reaction related experiments. For more information, please consult technical personnel.

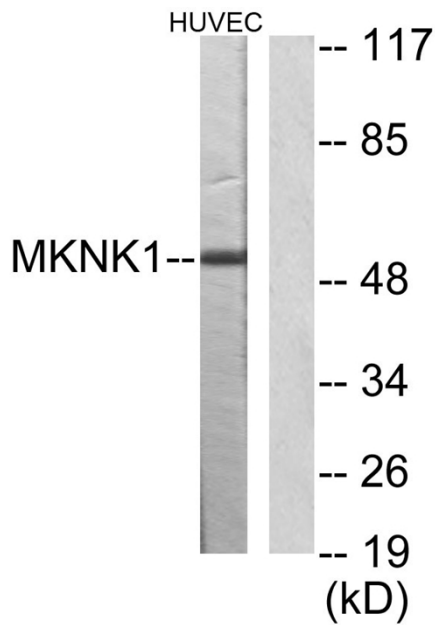
Products Images



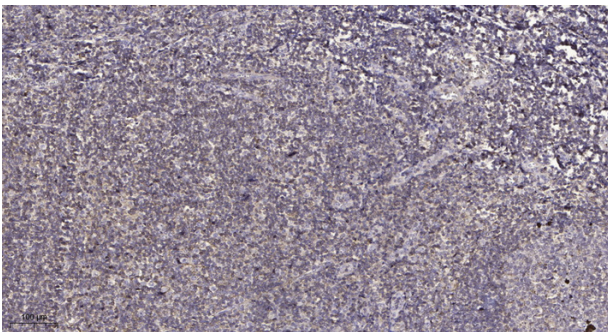
Western Blot analysis of various cells using Mnk1
Polyclonal Antibody diluted at 1:500



Western Blot analysis of HuvEc cells using Mnk1
Polyclonal Antibody diluted at 1:500



Western blot analysis of lysates from HUVEC cells, using MKNK1 Antibody. The lane on the right is blocked with the synthesized peptide.



Immunohistochemical analysis of paraffin-embedded human tonsil. 1, Antibody was diluted at 1:200(4° overnight). 2, Tris-EDTA, pH9.0 was used for antigen retrieval. 3, Secondary antibody was diluted at 1:200(room temperature, 30min).